



### Headline Statistics

WCWSS DAM STORAGE  
(%)

67.8

WEEKLY DAM LEVEL CHANGE  
(%)

-2.20

AVERAGE TOTAL  
DAILY WATER USE  
(MLD)

1038

### Water Resource Status

WATER RESOURCE STATUS	MEANING OF CURRENT STATUS
Early Drought Caution	<p>'Continued water wise use encouraged due to lower than anticipated dams level, cautioning possible start of a drought cycle'</p> <p>The main dams supplying the City are approximately 15% lower than last year - as shown on Page 3. While there is no immediate reason for concern and no expected restrictions for the next year, this updated drought risk status is part of the City's proactive approach to monitoring for and managing future droughts. This status and the corresponding actions are discussed in the Water Outlook 2023. The latest analysis has been incorporated into the dashboard update</p> <p>The Water Resource Status will be updated again in February 2026.</p>

### Water Production from Different Sources

MAJOR DAMS  
(MLD)

1026

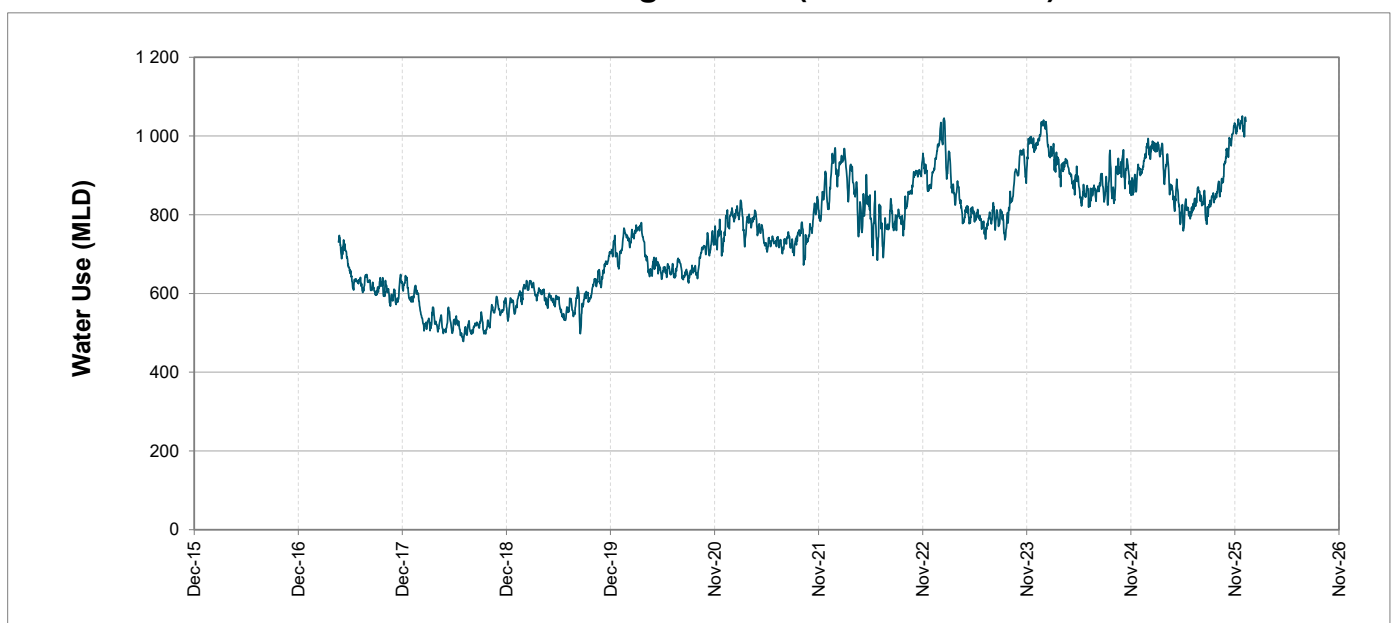
MINOR DAMS  
(MLD)

5

GROUND WATER  
AND SPRINGS  
(MLD)

7

### Overall Water Usage Trend (2010 - Present)



WCWSS means Western Cape Water Supply System

MLD means million litres per day

More information on Water Saving and Restrictions is available on the City of Cape Town's 'ThinkWater' website

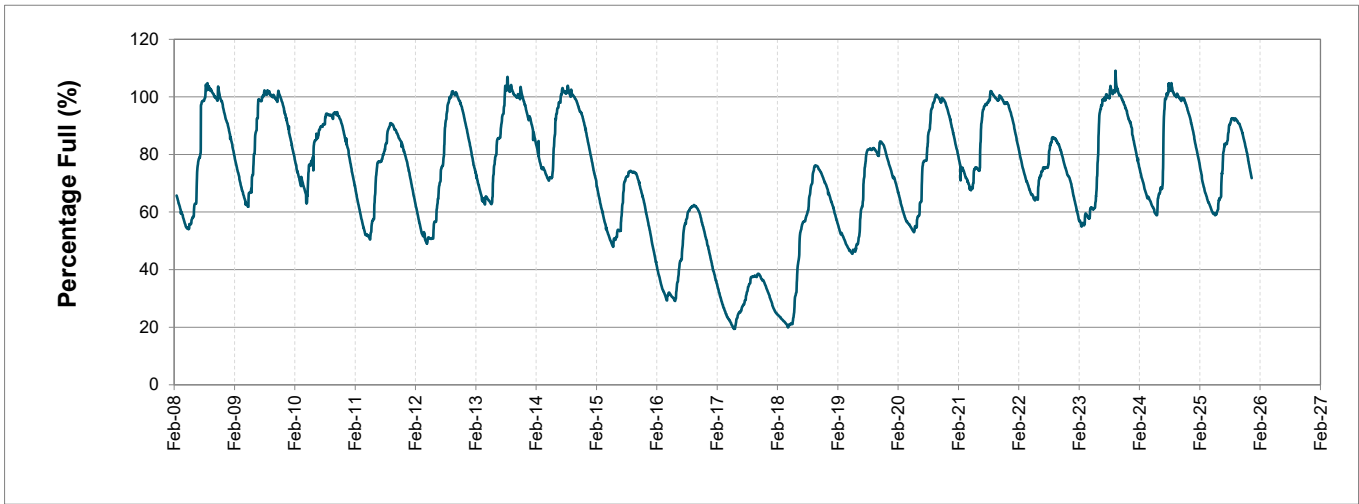
Water Stored in Major Dams (WCWSS)

Overall Percentage Full 67.8%

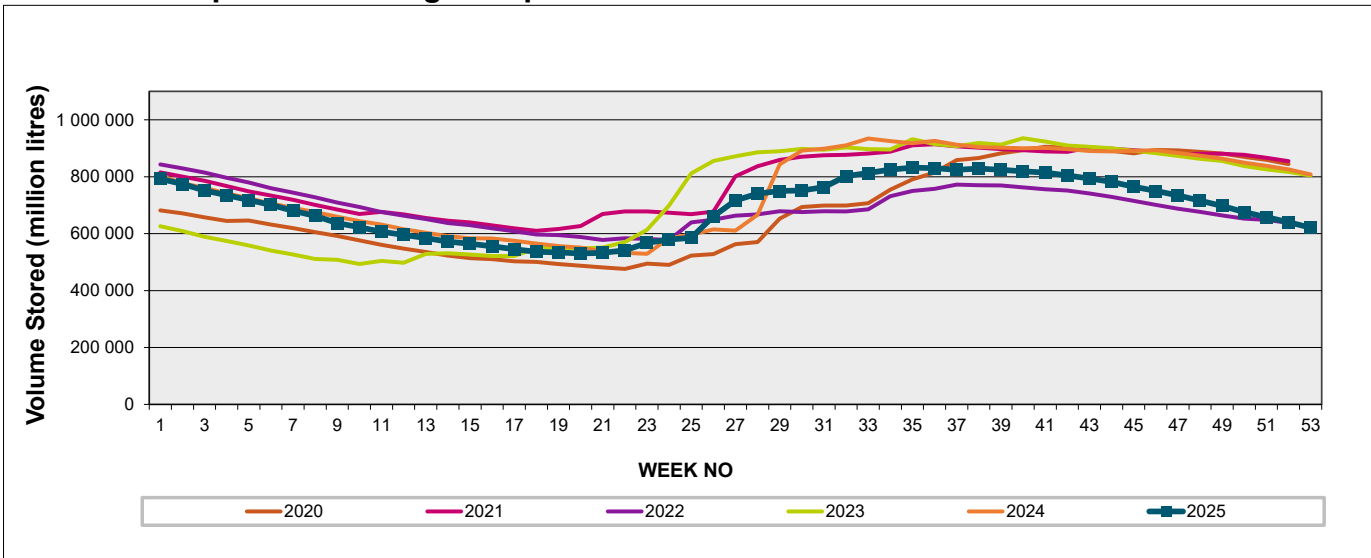
Weekly Change -2.2%

MAJOR DAMS (WCWSS)	STORAGE						
	CAPACITY	%	%	%	%	%	%
	MI	08 January 2026	Previous week	2025	2024	2023	2022
BERG RIVER	130 010	70.1	72.6	88.9	90.2	84.2	94.3
STEENBRAS LOWER	33 517	65.0	66.8	80.8	85.1	69.4	87.3
STEENBRAS UPPER	31 767	87.8	85.1	95.8	97.8	93.6	96.3
THEEWATERSKLOOF	480 188	62.8	64.9	87.4	84.2	64.5	94.9
VOËLVLEI	164 095	75.8	79.3	89.5	84.8	54.6	89.4
WEMMERSHOEK	58 644	72.6	73.9	82.4	97.4	80.8	84.1
TOTAL STORED	898 221	609 319	628 954	787 860	777 278	609 206	834 181
% STORAGE		67.8%	70.0%	87.7%	86.5%	67.8%	92.9%

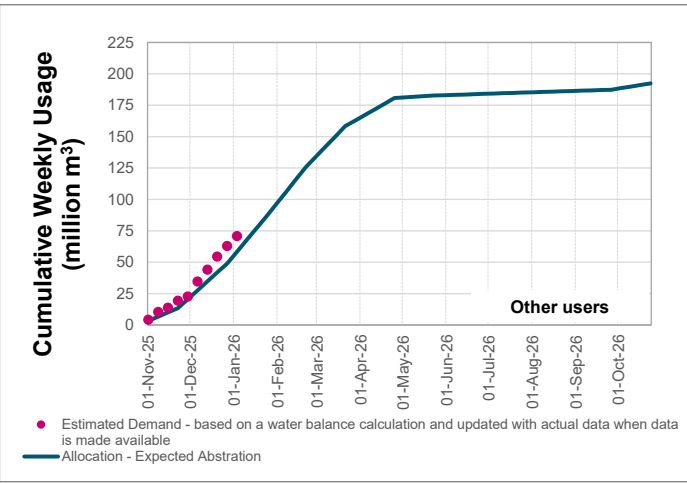
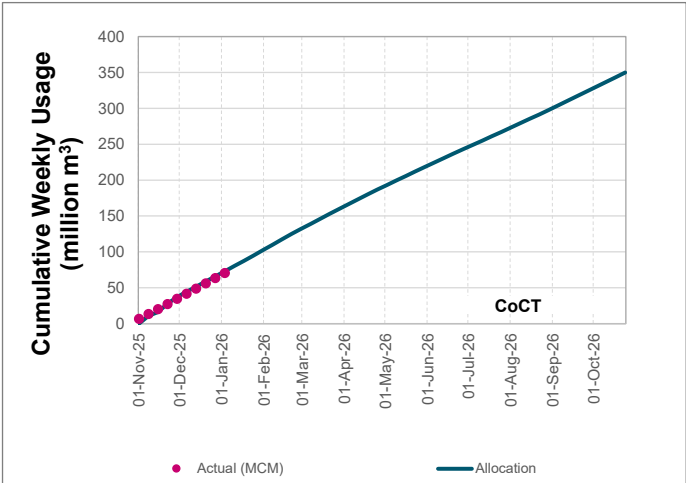
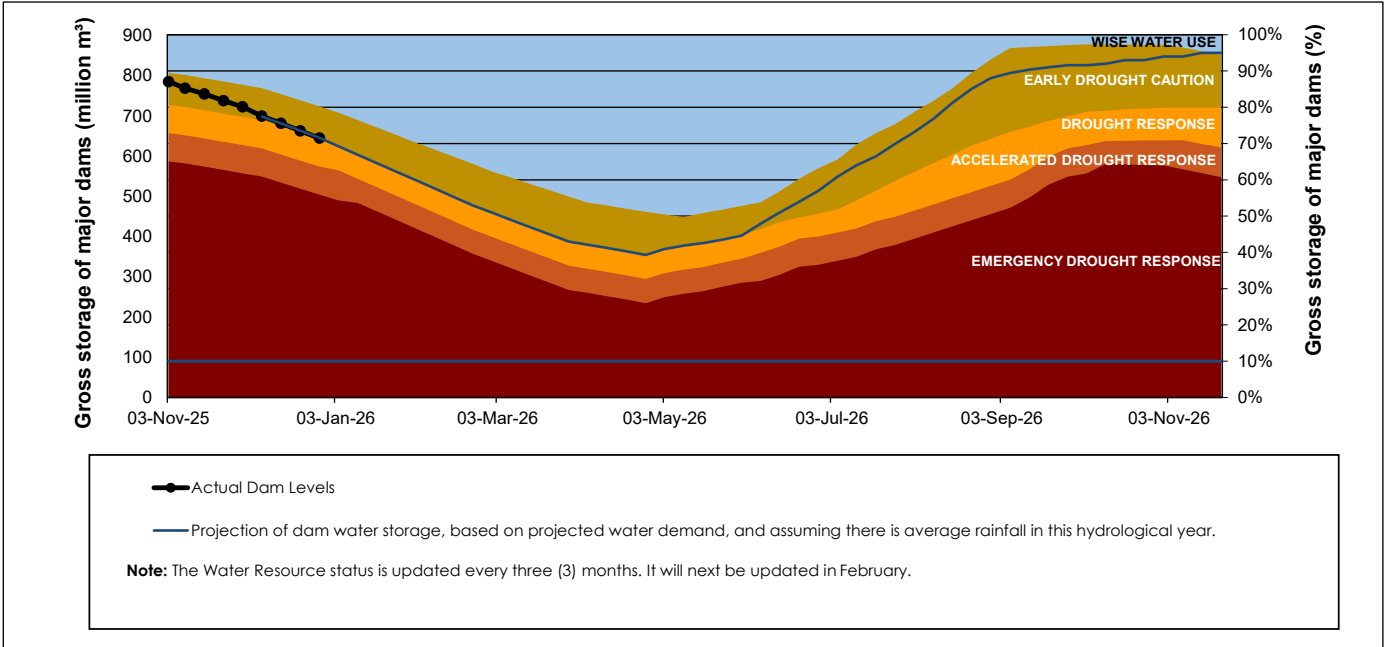
WCWSS Storage Record (2008 - Present)



WCWSS Comparative Storage Graph



Projected WCWSS Dam Storage Levels



Water Stored in Minor Dams

Overall Percentage Full	52.0	Weekly Change	-0.66
-------------------------	------	---------------	-------

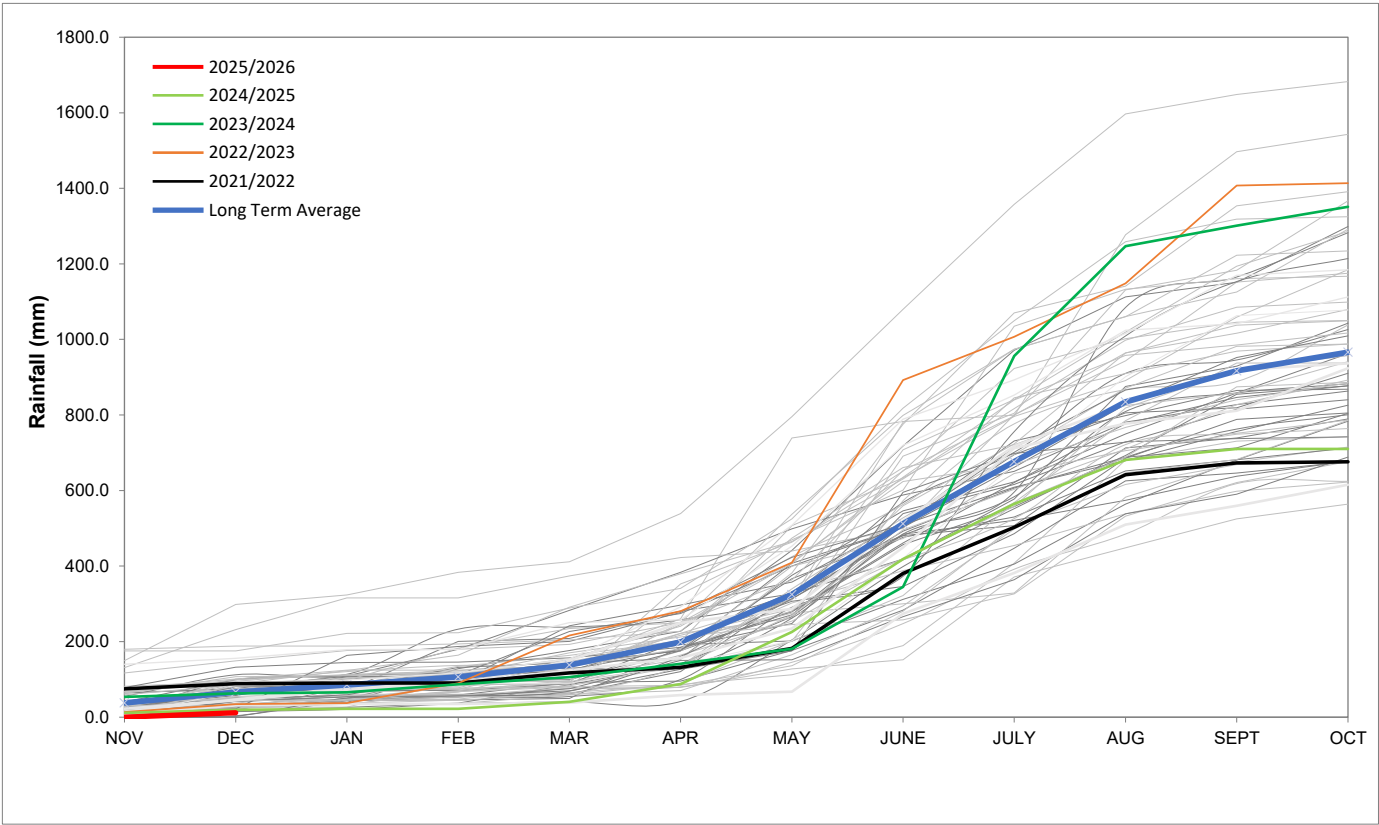
MINOR DAMS	STORAGE						
	CAPACITY	%	%	%	%	%	%
	MI	08 January 2026	Previous week	2025	2024	2023	2022
ALEXANDRA (Table Mountain)	126	31.5	29.6	47.9	49.5	53.5	85.5
DE VILLIERS (Table Mountain)	243	58.0	58.2	90.6	98.1	80.6	61.5
HELY-HUTCHINSON (Table Mount)	925	14.2	14.0	61.0	47.4	25.1	43.2
KLEINPLAATS (Simon's Town)	1 368	46.8	47.4	40.6	70.8	44.6	82.2
LAND-EN-ZEEZICHT (Helderberg)	451	84.2	86.2	94.4	80.8	86.4	93.5
LEWIS GAY (Simon's Town)	182	53.6	59.1	42.1	62.9	43.8	78.0
VICTORIA (Table Mountain)	128	51.5	54.9	95.0	83.7	85.4	62.2
WOODHEAD (Table Mountain)	954	83.6	83.7	58.6	75.1	67.9	82.7
Total Stored	4 377	2275.0	2304.0	2574.2	2975.5	2320.5	3175.3
Percentages stored		52.0	52.6	58.8	68.0	53.0	72.5

# Rainfall Recorded

RAINFALL (mm)	01-Jan	02-Jan	03-Jan	04-Jan	05-Jan	06-Jan	07-Jan	Jan	
								Total*	LT Average
Blackheath Upper	0.0	0.0	0.0	0.0	0.0	0.0	0.0	0.0	15.3
Brooklands	0.0	0.0	0.0	0.0	0.0	2.0	0.0	2.0	27.7
Newlands	0.0	0.0	0.0	0.0	0.0	0.0	0.0	0.0	37.4
Steenbras	0.0	0.0	0.0	0.0	2.1	3.0	0.0	0.0	29.5
Table Mountain (Woodhead)	0.0	0.0	0.0	0.0	10.5	20.5	0.0	31.0	52.7
Theewaterskloof	0.0	4.0	0.0	0.0	0.0	0.0	0.0	4.0	24.9
Tygerberg	0.0	0.0	0.0	0.0	0.0	1.2	0.0	1.2	13.0
Voëlvlei	0.0	0.0	0.0	0.0	0.0	0.2	0.0	0.2	13.2
Wemmershoek	0.0	0.0	0.0	0.0	0.0	0.0	0.0	0.0	20.6
Wynberg	0.0	0.0	0.0	0.0	0.0	0.0	0.0	0.0	21.2
Notes: *Total/cummulative rainfall for month indicated above LT: Long Term									

# Accumulated Monthly Rainfall at Wemmershoek

Note: Wemmershoek station used due to long record and mountainous location



## Drinking Water Quality

### SAMPLE PASS RATE

Month	Water Quality Compliance (%)	Target (%)
Dec-21	99.09	98.00
Jan-22	99.04	98.00
Feb-22	99.04	98.00
Mar-22	98.99	98.00
Apr-22	98.96	98.00
May-22	98.90	98.00
Jun-22	98.96	98.00
Jul-22	99.46	98.50
Aug-22	99.47	98.50
Sept-22	99.46	99.00
Oct-22	99.47	99.00
Nov-22	99.45	99.00
Dec-22	99.36	99.00
Jan-23	99.36	99.00
Feb-23	99.35	99.00
Mar-23	99.29	99.00
Apr-23	99.24	99.00
May-23	99.24	99.00
Jun-23	99.18	99.00
Jul-23	99.19	99.00
Aug-23	99.14	99.00
Sept-23	99.10	99.00
Oct-23	99.10	99.00
Nov-23	99.04	99.00
Dec-23	99.15	99.00
Jan-24	99.16	99.00
Feb-24	99.12	99.00
Mar-24	99.16	99.00
Apr-24	99.20	99.00
May-24	99.21	99.00
Jun-24	99.26	99.00
Jul-24	99.27	99.00
Aug-24	99.31	99.00
Sept-24	99.33	99.00
Oct-24	99.37	99.00
Nov-24	99.42	99.00
Dec-24	99.42	99.00
Jan-25	99.48	99.00
Feb-25	99.57	99.00
Mar-25	99.61	99.00
Apr-25	99.65	99.00
May-25	99.66	99.00
Jun-25	99.62	99.00
Jul-25	99.69	99.00
Aug-25	99.69	99.00
Sept-25	99.70	99.00
Oct-25	99.70	99.00

This table shows CCT drinking water quality compliance according to the South African National Standard 241:2015. Compliance, measured against all prescribed chemical and microbiological components, consistently exceeds the very high CCT target of 99%. (Overall compliance percentages of continuous sampling and analysis are released on a monthly basis.